



To: Military Parachute Rigging Facilities

Date: 17 January 2012

From: T.K. DONLE – Technical Director - CPS

Subject: Sigma Pulley Loop - P/N: CPS-LOOP2-M-SIGMA - Proper Assembly

Equipment: SOV3-MM-TS Harness/Container Systems

Product Advisory

Background

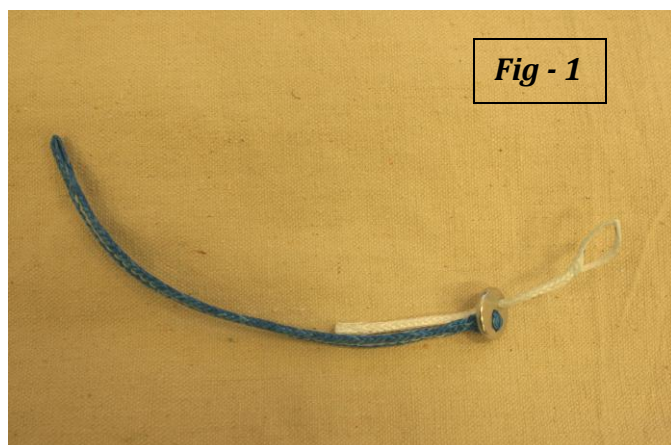
We have received reports that a shipment of **Sigma Pulley Loops, P/N: CPS-LOOP2-M-SIGMA** delivered to Natick Labs were incorrectly assembled. The 2-inch Dynema loop was inserted in the wrong direction through the Cypres washer. Engineering drawing, **SPECDWG-00025-1 Rev-3**, also accompanies this advisory for clarification and shows the proper assembly.

Action

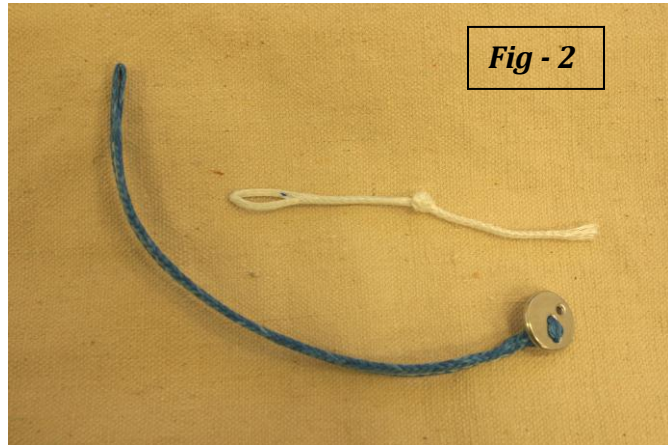
The following instructions show the proper method of removing the loop and reinserting it in the proper direction.

Fig-1 shows the **incorrect** assembly. Notice the white Dynema loop is facing in the wrong direction.

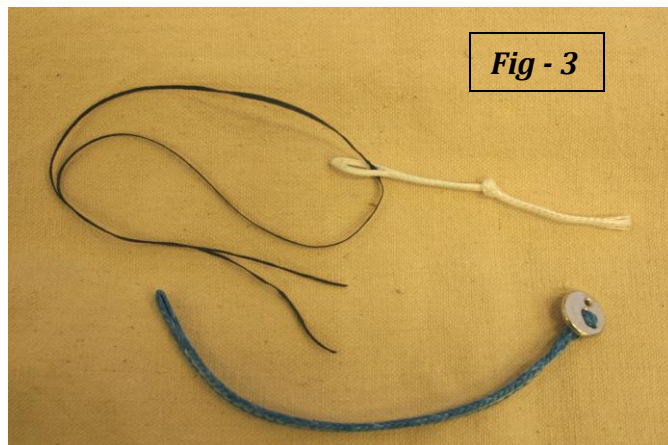
Note: The correct assembly is shown on Page-4 in *Fig-9*.



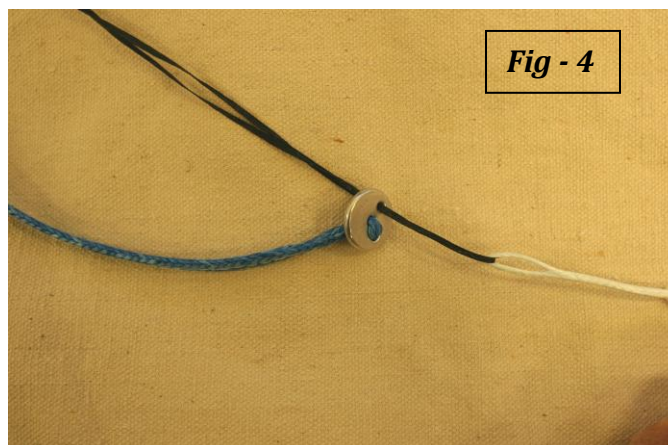
Remove the white Dynema loop from the Cypres washer as shown in *Fig-2*. Simply pull it free.



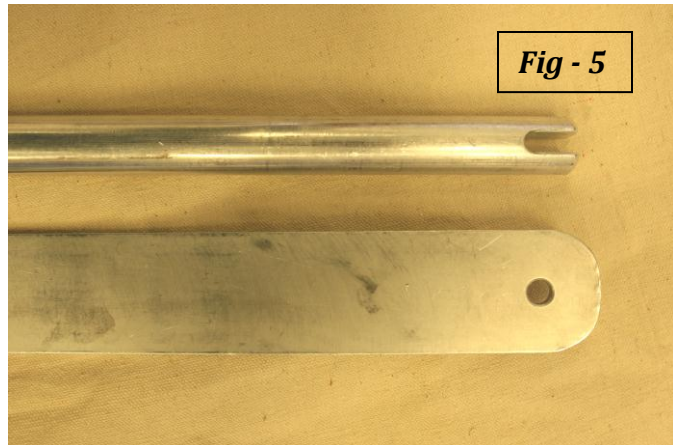
Cut a piece of Super Tack approximately 24" long. Insert the Super Tack into the Dynema loop to be used as a pull-up cord.
Fig-3



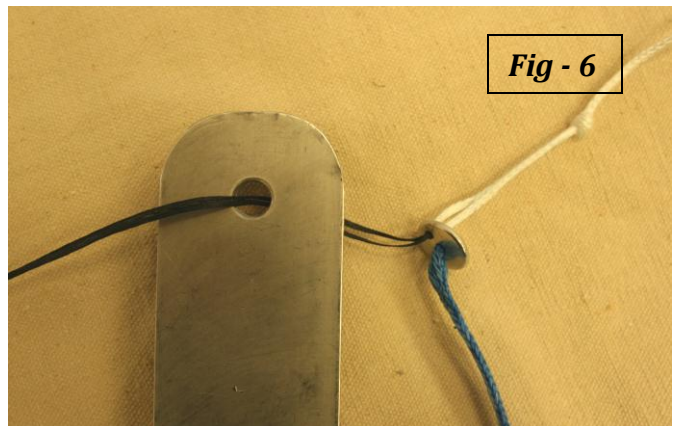
Insert the Super Tack into the hole in washer as shown in *Fig-4*.



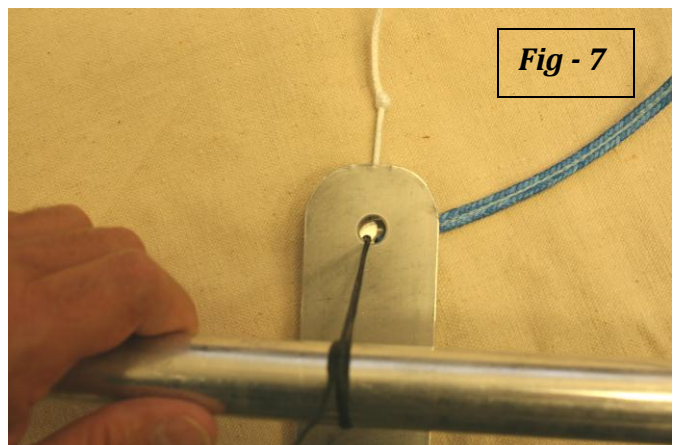
These tools were used to pull the white Dynema loop up through the hole in the washer due to the tight fit. Other similar tools may be employed to meet this objective. *Fig-5*



Insert the end of the Super Tack into the hole on the end of a packing paddle as shown. A knee board with a slot works equally as well. Pull the washer up against the plate. *Fig-6*

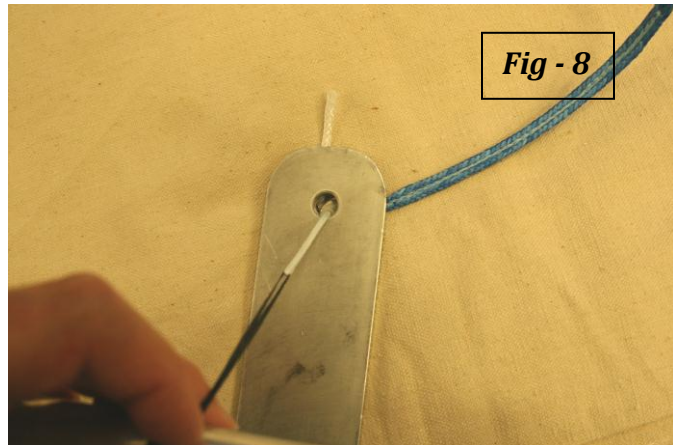


With the washer sitting flat against the plate, wrap the Super Tack around a crank or dowel. It takes a good amount of force to pull the loop up through the washer. *Fig-7*



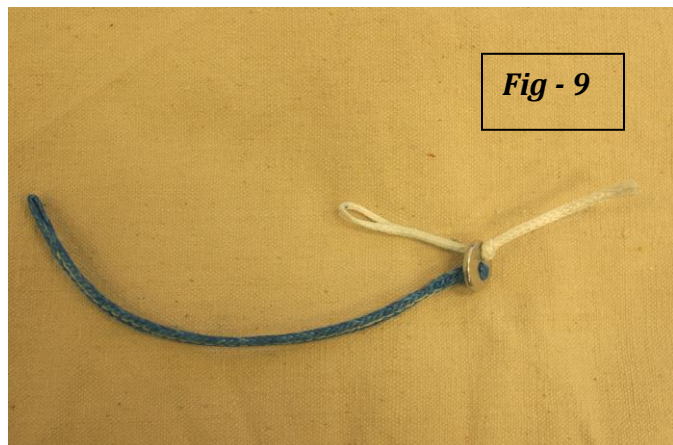


Pull the Dynema loop through the washer until the knot is against the washer. Remove the assembly from the plate and remove the Super Tack. *Fig-8*



The **correct** Pulley Closing Loop Assembly. *Fig-9*

P/N: CPS-LOOP2-M-SIGMA



If you have any questions, please contact CPS technical support.

Technical Department Contact

T.K. DONLE
Technical Director
tk@cpsworld.com
386-736-3862 X33
386-523-0718 Direct Line