



Sun Path Products Inc. 404 W Edinborough Ave. Raeford, NC 28376 (910) 875-9002

MJ - BOC Field Installation Instructions

ISSUE DATE: 15 June 2015



Provided Parts:

- 1 ea. **Spandex BOC Pocket** (shown below)
- 1 ea. **Bridle Line Cover** (shown to the right)

Note: Contrasting binding tape and thread were used throughout these instructions to better clarify the work.



Tools Required:

- Snips or scissors and stitch picker if preferred.
- 1 Medium to heavy weight straight-stitch machine in E-Nylon Thread.
- 1 Medium to heavy weight zigzag machine in E-Nylon Thread.

Note:

Setup straight-stitch and zigzag machines to the same width and stitches-per-inch as used on the container being sewn.

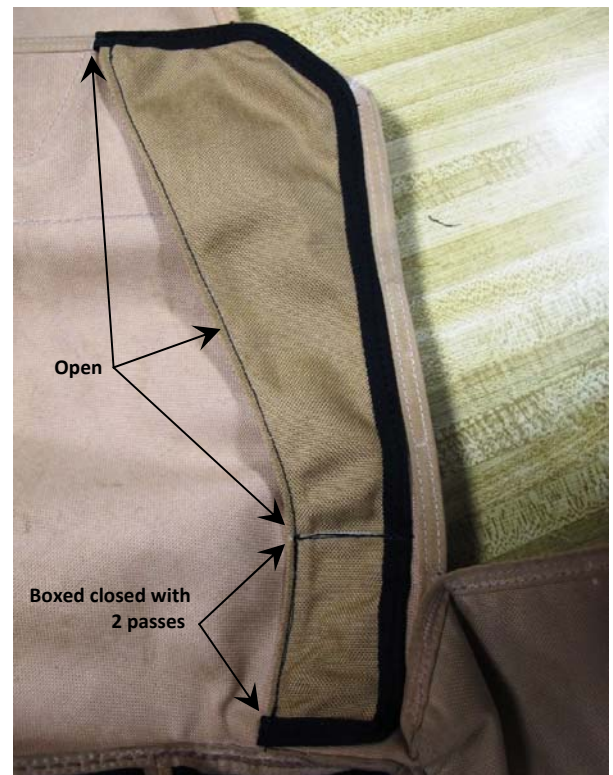
Step 1.

Identify bottom right main container corner (shown below). Unpick all but 1" (25mm) of the zigzags holding it closed (show to the right)



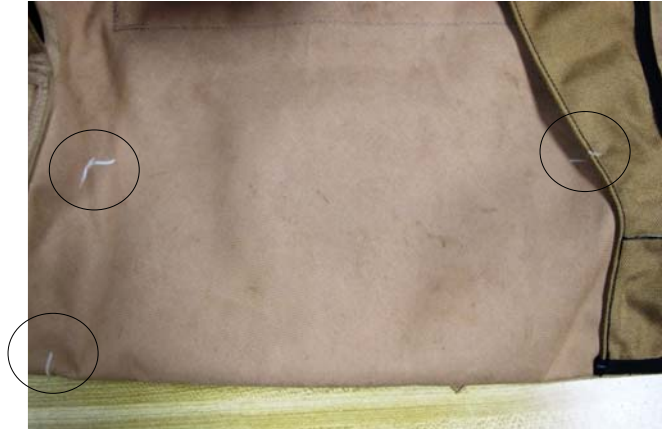
Step 2.

Lay **Bridle Line Cover** in place and align under single needle presser foot (show below). Begin sewing over the top of the outer stitch row with a double lock-stitch $\frac{3}{4}$ " - 1" (20-25mm) and proceed around to the very bottom. Finish at the bottom with two (2) complete passes forming a box stitch (shown to the right).



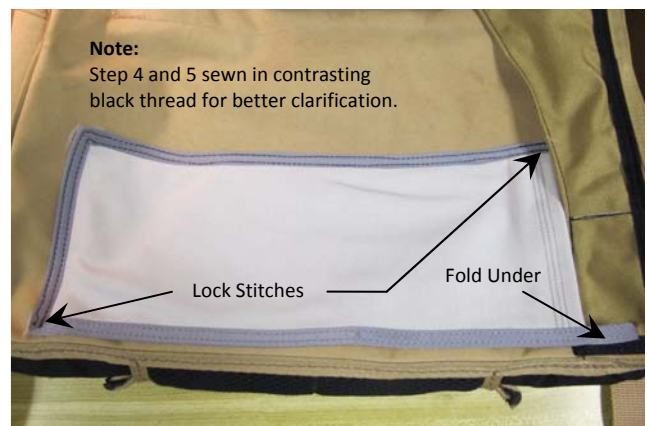
Step 3.

Lay **Spandex BOC Pocket** in place for marking (shown below).
Make three (3) reference marks (shown at right).



Step 4.

It is easiest to sew **BOC Pocket** in two (2) steps beginning at the bottom against the back-pad (shown below).
Sew a single pass on both rows of stitching, ending with a double lock-stitch $\frac{3}{4}$ " - 1" (20-25mm) long; fold the extended binding tape edge under (shown at right).



Step 5.

Complete the bottom two (2) passes in the same manner as the top (shown at right).

Note:

Zigzag the top and bottom of the pocket mouth with a stitch pattern $\frac{3}{4}$ " - 1" (20-25mm) long to reinforce the opening.



Step 6.

Ensure your work performed during Steps 1-5 is correct.

Reclose the bottom right corner of the main container with zigzag stitching.

Step 7.

Inspect work.

Installation is now complete.



AUTHORITY:

Complete Parachute Solutions, Inc.

T.K. DONLE – Technical Director

tk@cpsworld.com

Sun Path Products, Inc.

JEFF JOHNSTON – Engineering /R&D Manager

jeff@sunpath.com

~~~ End of Work Instruction ~~~