



PRODUCT SERVICE NOTIFICATION

ISSUE DATE: 16 January 2012

PRODUCT SERVICE NOTIFICATION #: 01162012

SUBJECT: Inspection of all “Reserve & Main Spring-Loaded Pilot Chutes” used in SOV3 Harness/Container Systems. Specifically, inspect for missing bartacks on the bridle attachment points (BAP). **See Figures 1 & 2.**

STATUS: MANDATORY

IDENTIFICATION: United Parachute Technologies (UPT), Vector II Pilot Chute P/N: CPS-PCR. The following “Manufacturing Lot” produced between 1/1/2006 – 4/30/2007, covering pilot chute S/N 44292 – 48188, may be missing bartacks on the BAPs. Parachute systems using this pilot chute are the SOV3-HH, SOV3-LI, SOV3-MI, SOV3-MM and SOV3-TS Harness/Container Systems.

BACKGROUND: During recent inspections prior to repacking, two (2) reserve pilot chutes were discovered with one (1) missing bartack each, on the BAP at the base of the pilot chute. These components had been in regular service since 2006. As a result of this discovery, UPT researched the manufacturing records and determined that pilot chutes produced prior to May 2007 were sewn with white bartacks on the white Dacron BAPs, making the bartacks very difficult to see. Beginning in May 2007, all BAPs were bartacked with contrasting “silver” thread as shown in **Fig-2** below.

Tests performed by UPT indicate that finger-trapped loops without bartacks or with only one bartack per BAP are slightly stronger (12-21%) than with bartacks. Unfortunately, we cannot guarantee that the finger-trapped connection will remain intact under all conditions. For this reason, all pilot chutes must be inspected.

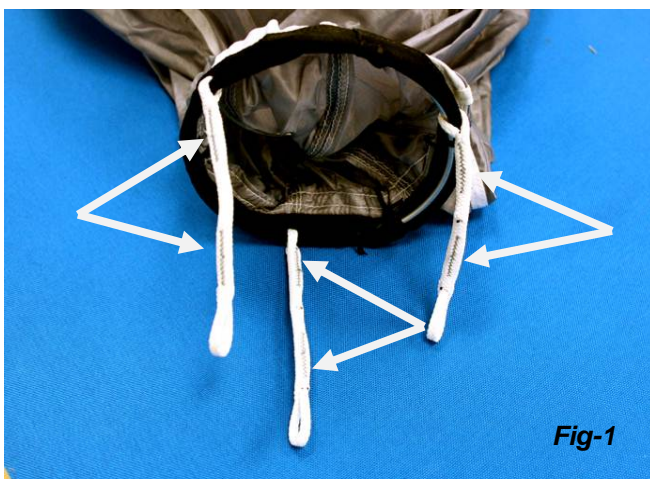


Fig-1

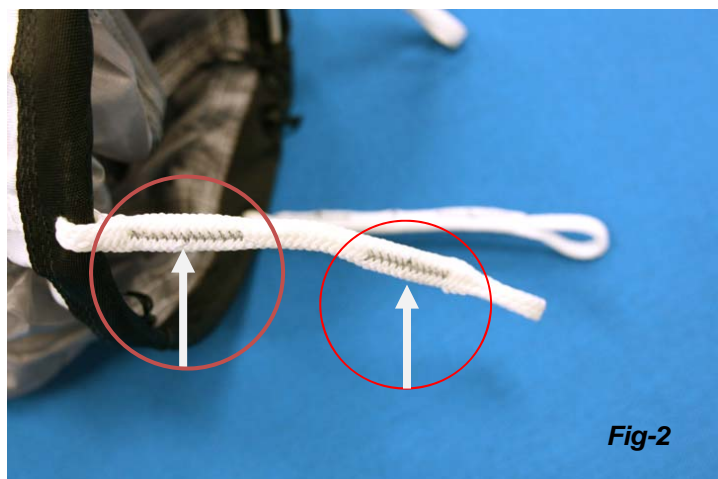


Fig-2



SERVICE NOTIFICATION:

All SOV3 Harness/Containers Systems use this reserve pilot chute, while some also use it as a main pilot chute. Each pilot chute's BAPs should be closely inspected to ensure there are two (2) bartacks on each BAP. There are three (3) BAPs on each pilot chute. Refer to **Fig-1 & Fig-2** above. Arrows denote bartack locations.

When missing bartacks on the BAPs are discovered, a master parachute rigger (or military equivalent) is authorized to install, or supervise the installation of these bartacks. If a bartack machine is not available, a zigzag pattern is also acceptable. Refer to specifications below for guidance. Please fill-out and submit *Form TR425B* (the last page of this notice). Post, Fax or Email to: tk@cpsworld.com

Bartack Type: 42 stitch pattern
Length: 1" (26mm) ± 1/8" (4mm)
Thread Type: Size E, #69, T70 Nylon
Thread Color: Contrasting

Zigzag Type: Single-throw
Length: 1" (26mm) ± 1/8" (4mm)
Thread Type: Size E, #69, T70 Nylon, 10-11 Stitches per Inch, 1/8" wide. Begin sewing pattern from the center - to the end - back to the other end - finishing in the center. 46 total stitches minimum, up to 66 maximum.
Thread Color: Contrasting

If your paraloft is unable to perform this work, CPS will facilitate it - free of charge. Please contact CPS Customer Service to obtain a RMA number for proper tracking of your equipment. Once the RMA number is obtained, you may ship your pilot chute(s) to the CPS address listed below. The system owner is responsible for all shipping charges.

Recommended Preparation Prior to Shipping:

- Disconnect the pilot chute(s) from the reserve bridle(s).
- Fill-out *Form TR425B*. (See Attached)
- Submit *Form TR425B* with pilot chutes.
- Write the RMA number on the outside of the package.

COMPLIANCE DATE: MANDATORY INSPECTION AT NEXT INSPECTION/REPACK

NOTE: CPS recommends the BAPs be a point of inspection during packing and in-servicing of all SOV3 Parachute Systems.

AUTHORITY:

Complete Parachute Solutions, Inc.
T.K. DONLE – Technical Director

United Parachute Technologies, LLC
Mark Procos – General Manager

DISTRIBUTION:

All Military Users of SOV3 Parachute Systems
All Military Parachute Rigger Lofts servicing SOV3 Systems

1320 E. International Speedway Blvd., Suite 1, DeLand, FL 32724
PH: (386) 736-3862 FX: (386) 736-3899
www.cpsworld.com



TR425B – CPS PRODUCT DEFECT REPORT FORM

REV-0

PRODUCT SERVICE NOTIFICATION #: 01162012

(Fill in the appropriate data below)

Date:

Location:

Name Filing Report:

Military Unit:

Defect (Description):

Equipment Details:

Harness/Container: Model S/N DOM

Pilot Chute (CPS-PCR) S/N DOM

Actions: Bartacks/Zigzags Installed – or - Returned to CPS for rework

(Circle the appropriate response above)

Submit copies of this report to:

- T.K. DONLE - CPS Technical Department

~~~ End of Notification ~~~